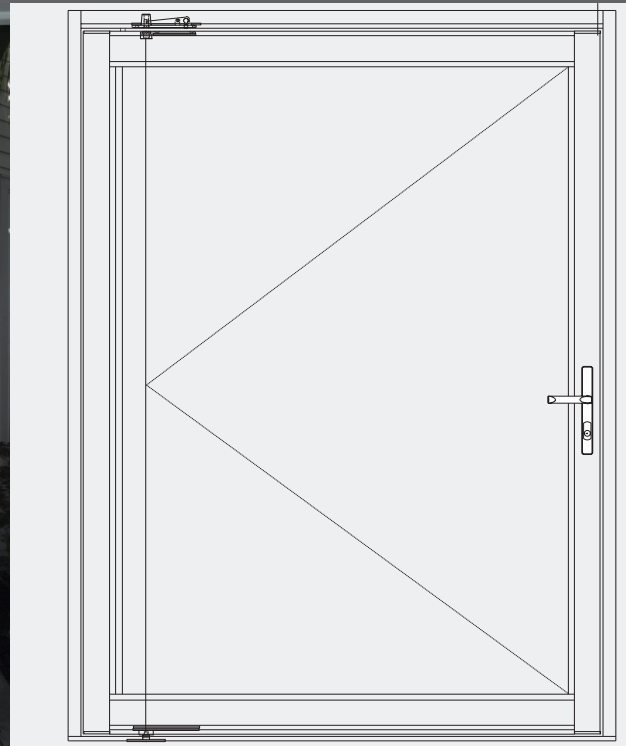
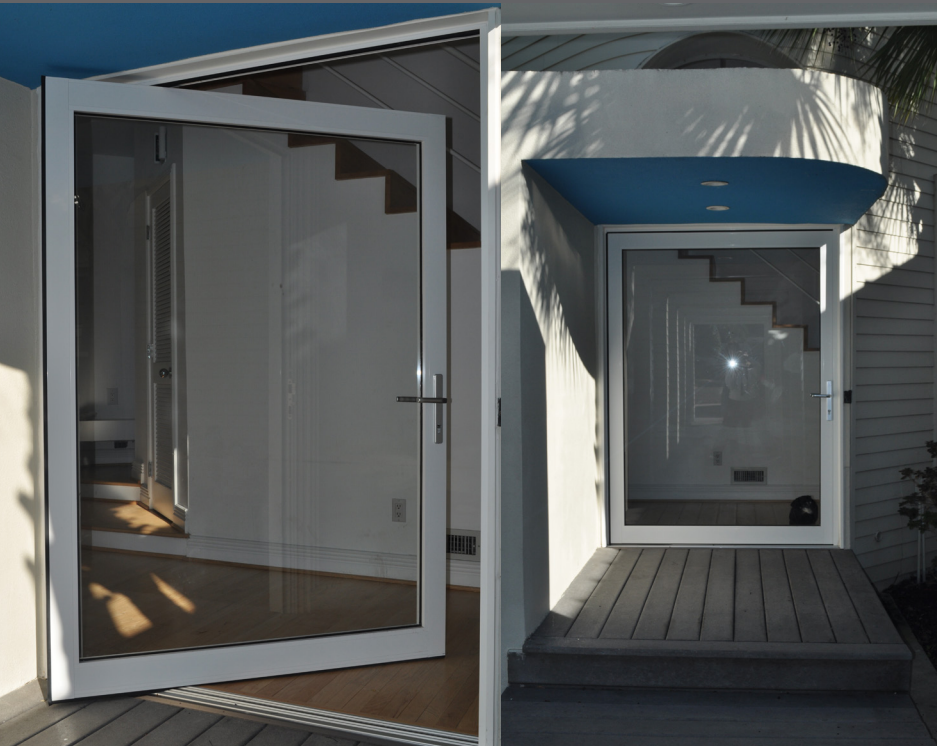
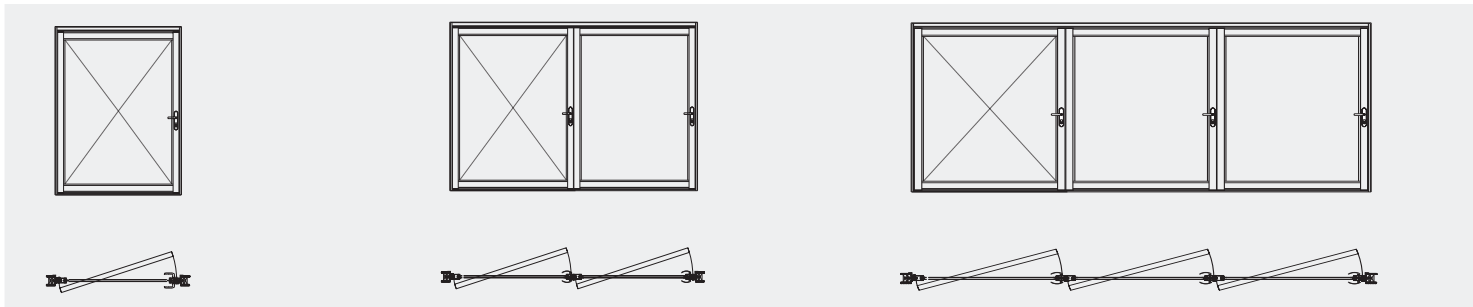


SI3250P • SI3350P • SI3450P • SI3600P



Series SI3000P thermally enhanced aluminum pivot doors can be used in commercial and residential applications. System design offers exceptional air, water, structural, and thermal performance in any condition. Multiple sill options and profile dimensions provide greater performance and design flexibility. Customization of product profiles, hardware, sills, panel size, and testing can be completed upon request.



## Features:

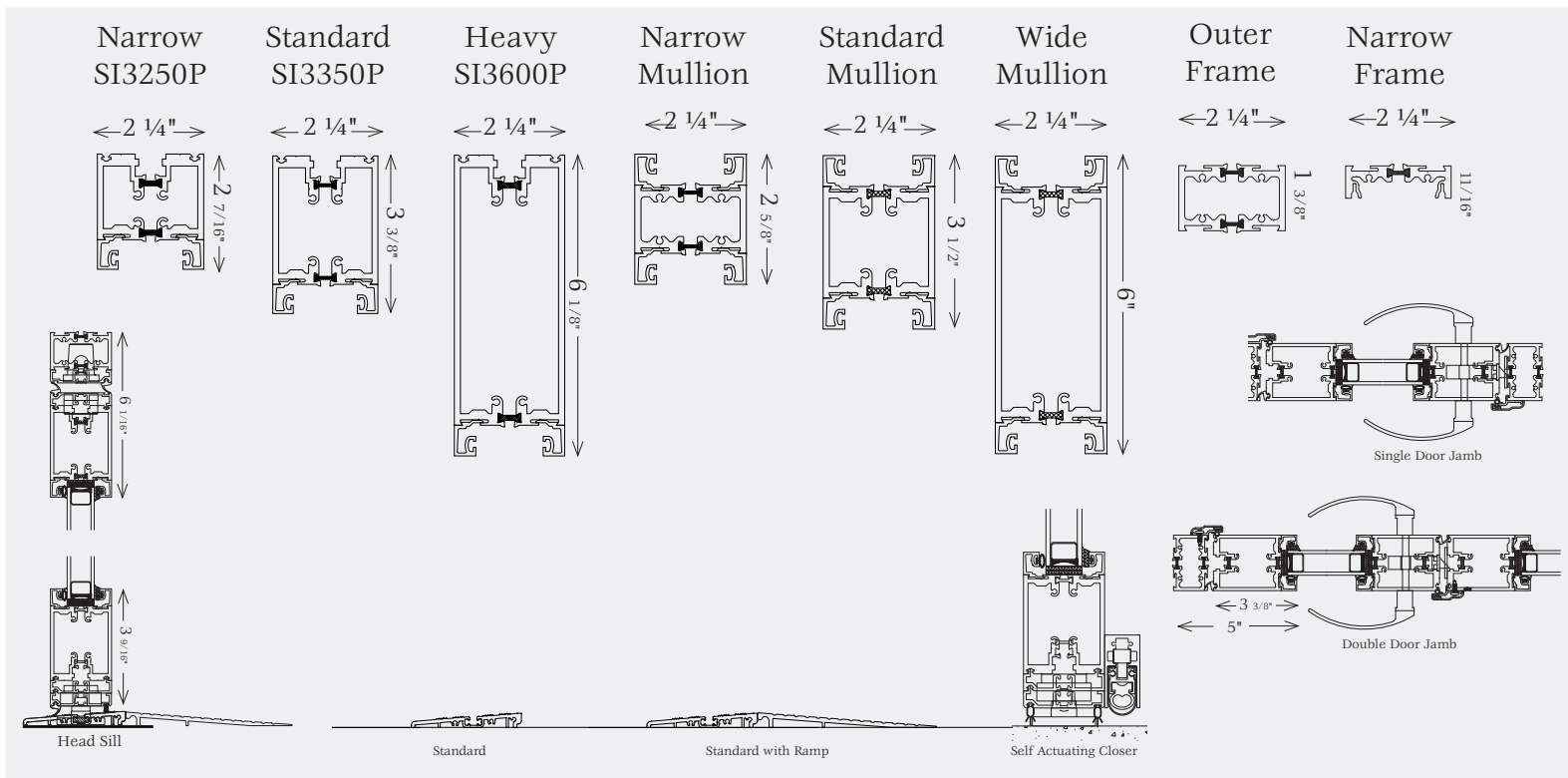
- Thermally enhanced with iso-bar thermal break
- Maximum panel size 5' x 9'. Larger sizes available dependent upon engineering requirements
- Multiple hardware styles and finishes
- Accommodates monolithic and insulated glazing infills from 3/16" to 1 1/8"
- Standard finishes: AAMA 2603
  - Duracron: Hartford Green, Bronze, Black, Natural Clay, White, Sandstone
- Class I anodized: Dark Bronze, Clear
- Left, right, or center pivot options
- Minimum 7" distance from center of pivot point to edge of jamb
- Inswing, outswing, and dual acting
- LEED friendly system including recycled content
- Designed and manufactured in the U.S.A.

## Options:

- Matching fixed transoms and sidelites
- Custom finishes
  - Powder coat finish: AAMA 2603-2604
  - Fluoropolymer (50% or 70%): AAMA 2604-2605
  - Veneer & cladding options
  - Dual color or dual finish options
- Decorative interior and exterior grids
- Self actuating closers
- Multiple sill designs, including ADA compliant ramps and sill-less options
- Factory installed sill drain tubes, if required
- Designed to accommodate any monolithic, insulated, laminated, decorative, polycarbonate, or solid panel infill



SI3250P • SI3350P • SI3450P • SI3600P

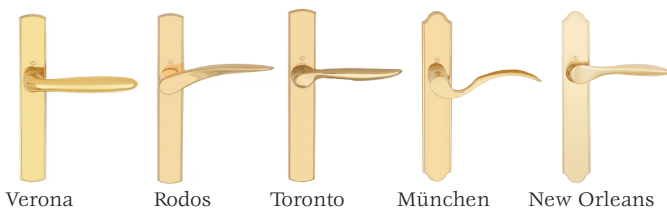
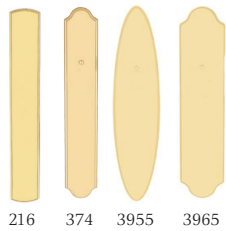


## Coastal Applications

### Back Plate Options

### Brass Handle Options

### Color Options



- Polished Chrome (C)
  - Oil Rubbed Brass
  - Brushed Chrome (C)
  - Rustic Umber
  - White
  - Matte Black
  - Satin Nickel (C)
  - Brass (C)
  - Antique Nickel (C)
- (C) = Heavy Saltwater Resistant Finishes

\*Product Option Not Yet Tested. Oversized units are available dependent upon engineering approval.

### Exterior Entry Trim



### Panic



Entry trim with thumb turn and wire pull available.

## Inland Applications

### Back Plate Options

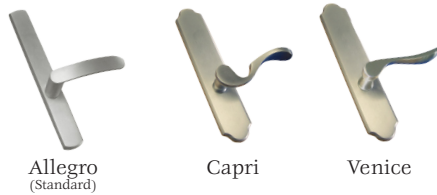
### Solid Brass Handle Options

### Color Options



Both styles available with:

- 46 - Thumb Turn - Interior Lever - Exterior
- 10 - Lever - Interior Lever - Exterior
- 92 - Thumb Turn - Interior Keyed Exterior



- Satin Chrome
- Polished Chrome
- Polished Brass Brass\*\*
- Antique Brass
- Dark Bronze (25 US10B)
- Pewter
- White Powder Coated
- Black

Hardware Not available for doors exceeding 2 1/2" thickness

### Hinge Options



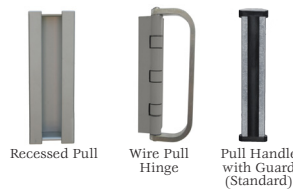
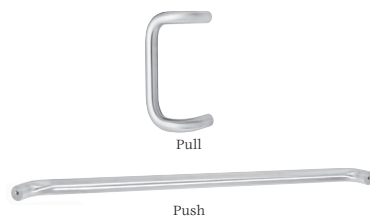
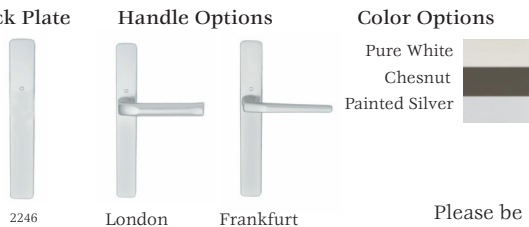
**Hinge Finish Options:**  
Clear Anodized, Dark Bronze Anodized, Black, Bronze Color, Natural Clay, White, or Sandstone

**Custom Colors Available\***

## Inland Applications Aluminum Options

### Wire Pulls

### Lock Options



**Handle color choices:**  
Clear Anodized, Dark Bronze Anodized, White Painted, or Bronze Painted

**Custom Colors Available\***  
(\*Additional Charges Apply)

Please be sure to visit our website for additional product information.

[www.solarinnovations.com](http://www.solarinnovations.com)