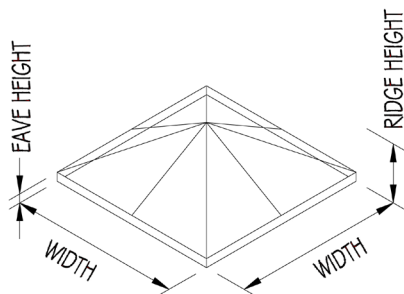
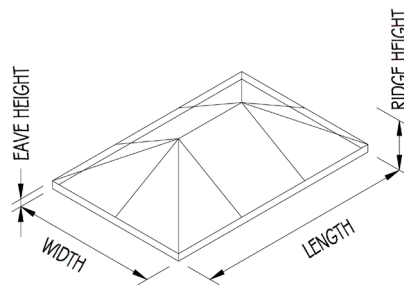




SI5800 thermally enhanced 30° “fixed pitch” aluminum welded curb skylight system for use in commercial and residential applications. The welded curb design provides a weather-tight, self-flashing curb for simplified installation onto a structural curb provided “by others”.



Pyramid



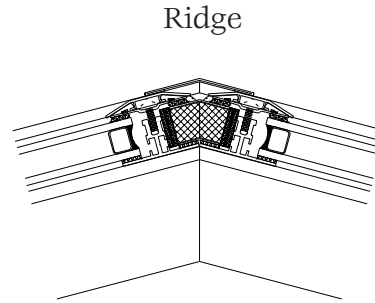
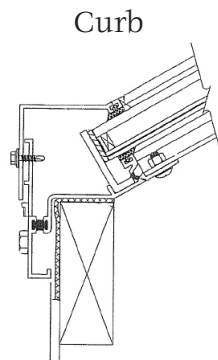
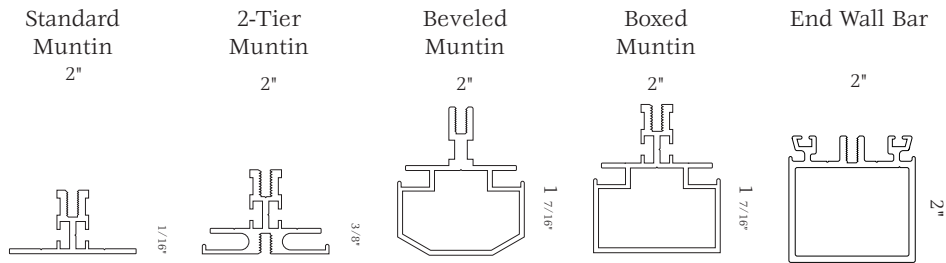
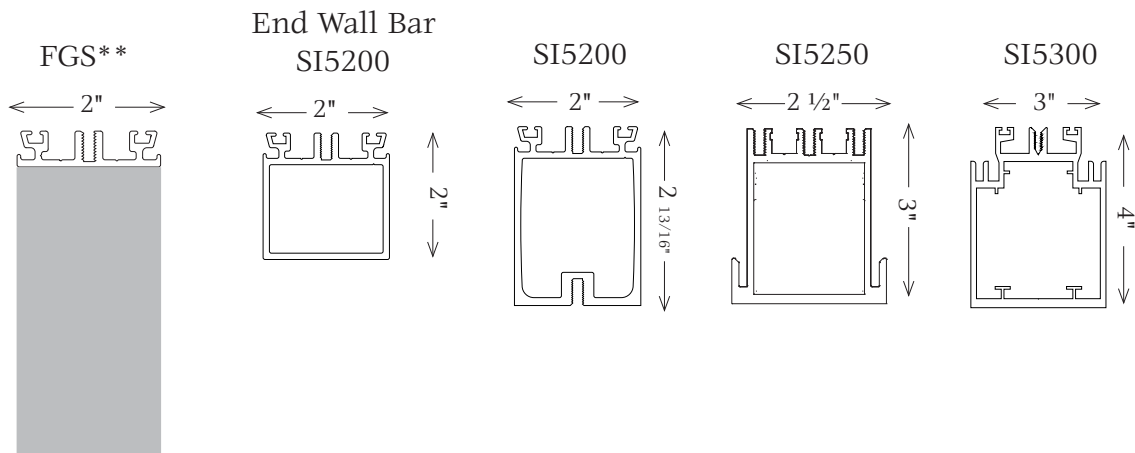
Hip End

Features:

- Thermally-enhanced aluminum welded curb
- Self-flashing curb
- Curb fasteners on the vertical face, for added water protection
- 30 Degree fixed pitch
- Pre-assembled and pre-glazed up to
 - 8' x 8' Pyramid
 - 8' x 12' Hip Ends
- 2-or 3-Tiered drainage system with concealed interior condensation gutters.
- Glazing in-fills from 3/16" to 1 1/2"; thicker glass options depending upon engineering
- Standard finishes
 - Duracron: Hartford Green, Bronze, Black, Natural Clay, White, Sandstone

Options:

- Aluminum or wood rafters and purlins
- Custom finishes
 - Class I anodized: Dark Bronze, Clear
 - Powder coat finish: AAMA 2604-05
 - Fluoropolymer: 50% or 70%
 - Veneer & cladding options
- Operable and retractable venting options
- Designed to accommodate any monolithic, insulated, laminated, decorative, polycarbonate, or solid panel infill



Performance Test# 110-9647-1				
Panel Size	Rating	DP (psf)	Air (@ 1.57psf)	Water (@ 5.0gph/ft ²)
86" x 86" Pyramid	HC-80	± 80	.05	6.0

**2.5" and 3" FGS are possible
 Testing and performance results may vary depending upon sill and hardware selections.
 Please be sure to visit our website for additional product information.

www.solarinnovations.com

