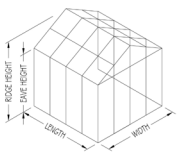
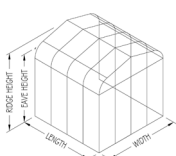




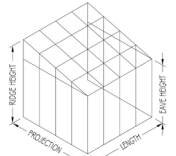
SI5000 Series thermally enhanced aluminum tubular glazing system for commercial and residential applications. Outside set, pressure glazed system with overlapping construction for positive drainage. Can be used to construct glazed structures including curtain walls, storefronts, greenhouses, conservatories, pool enclosures, skylights, canopies, etc.



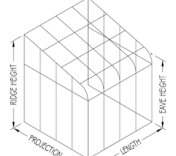
Straight Eave
Double Pitch



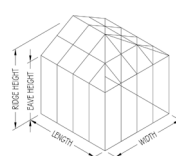
Curved Eave
Double Pitch



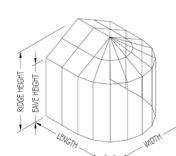
Straight Eave
Lean to



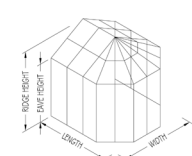
Curved Eave
Lean to



Hip End



8 Sided
Conservatory



Conservatory
Nose

Features:

- Thermally enhanced aluminum profiles and sill members
- Overlapping construction creates positive drainage within profiles
- Glazing infills from 3/16" to 1 1/8"; thicker glass options depending upon engineering
- Standard finishes
 - Duracron: Hartford Green, Bronze, Black, Natural Clay, White, Sandstone
- Integrate SI operable door and window systems
- Integrated slope glazing with operable vents
- LEED friendly system including recycled content
- Designed and manufactured in the U.S.A.

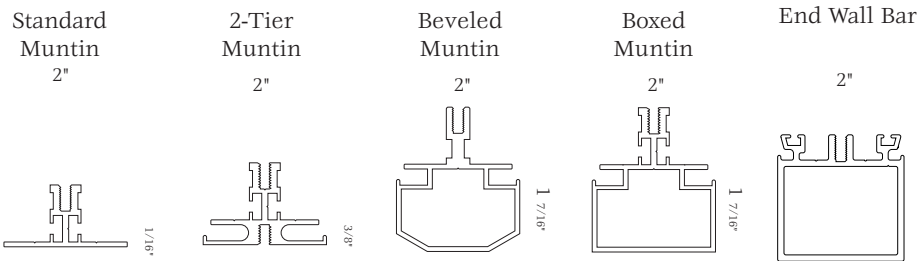
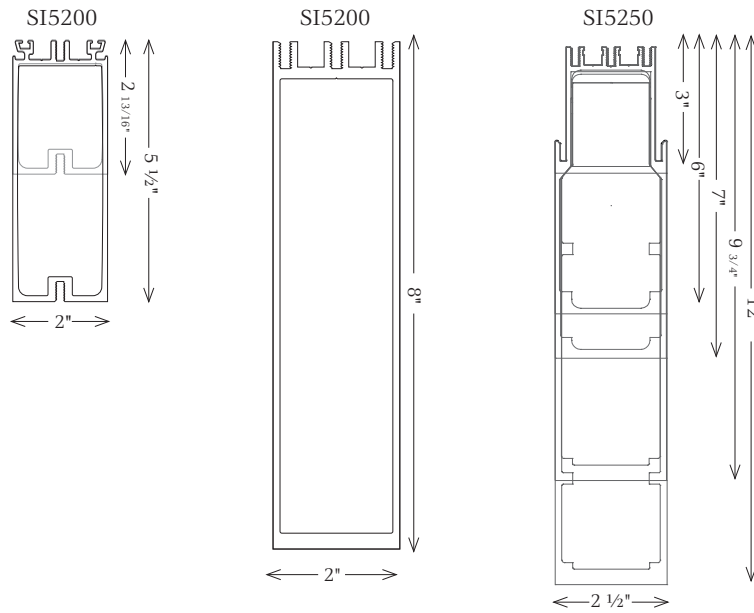
Options:

- Decorative accessories
 - Cover caps, interior trim (crown, sill, etc), column covers, gutters, finials, SDL's, and ring and collar
- Custom aluminum finishes
 - Class I anodized: Dark Bronze, Clear
 - Powder coat finish: AAMA 2604-05
 - Fluoropolymers: 50% or 70%
 - Wood and metal cladding
 - Dual Color or Dual Finish Options
- Large missile impact tested
- Free-standing structures; or with integrated steel structures
- Photovoltaic panel inserts (BIPV)
- Turn-key solutions for greenhouses, pool enclosures, and sunrooms

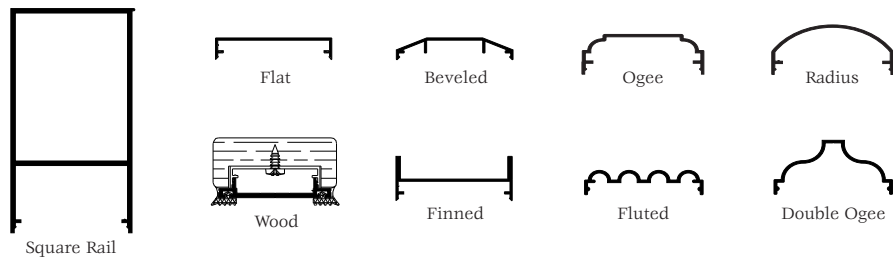
Additional configurations available.



SI5200 • SI5250 • SI5300

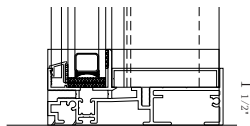


Cover Cap Options



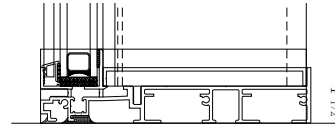
Regular Sill

4 5/8"



Heavy Sill

7 5/16"



SI5200 Performance

Test Number	Panel Size	Certification	Impact	DP (psf)	Air (@ 6.24psf)	Water (@ 5.0gph/ft ²)	Glazing
110-11054-2 110-11054-6	51" x 99"		Non-Impact Impact	± 60	.09	9.0	Monolithic 7/16" HS Laminated .075 Storm Inner Layer
110-11054-3 110-11054-5	51" x 99"		Non-Impact Impact	± 60	.08	9.0	1 1/16" HS IGU .075 Storm Inner Layer

Please be sure to visit our website for additional product information.
www.solarinnovations.com

