

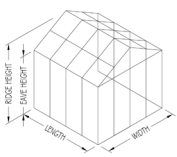
# Flexible Glazing System

# SI5000FGS

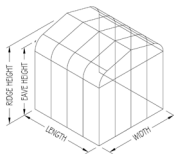
SI5200FGS • SI5250FGS • SI5300FGS



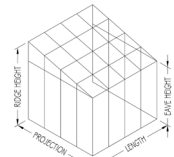
SI5000 FGS series thermally enhanced aluminum glazing system for commercial and residential applications. The veneer glazing system can be fastened to almost any capable sub-structure for a minimized profile depth. Can be used to construct skylights, canopies, curtain walls, etc



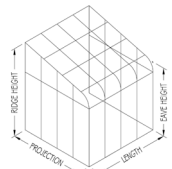
Straight Eave  
Double Pitch



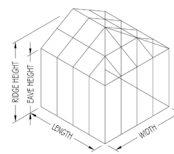
Curved Eave  
Double Pitch



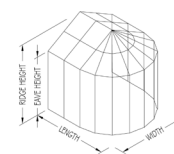
Straight Eave  
Lean to



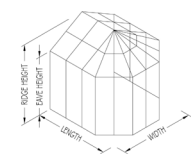
Curved Eave  
Lean to



Hip End



8 Sided  
Conservatory



Conservatory  
Nose

## Features:

- 2", 2.5", 3" face widths
- Thermally enhanced aluminum profiles
- Overlapping construction creates positive drainage within profiles
- Glazing infills from 3/16" to 1 1/8"; thicker glass options depending upon engineering
- Standard Finishes
  - Duracron: Hartford Green, Bronze, Black, Natural Clay, White, Sandstone
- LEED friendly system including recycled content
- Designed and manufactured in the U.S.A.
- System requires capable substructure for fastening

## Options:

- Large missile impact tested
- Cover cap options
- Custom aluminum finishes
  - Class I anodized: Dark Bronze, Clear
  - Powder coat finish: AAMA 2604-05
  - Fluoropolymers: 50% or 70%
  - Wood and metal cladding
- Turn-key solutions for greenhouses, pool enclosures, and sunrooms

Additional configurations available.



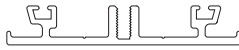
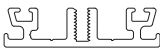
# SI5000FGS

# Flexible Glazing System

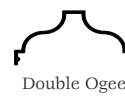
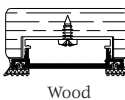
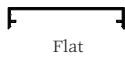
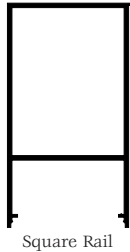
SI5200FGS • SI5250FGS • SI5300FGS

2" FGS

3" FGS

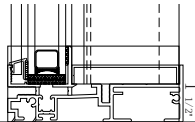


Cover Cap Options



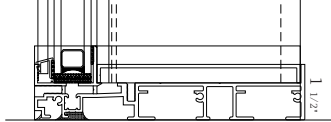
Regular Sill

4 5/8"



Heavy Sill

7 5/16"



Performance

Panel Size	Certification	Impact	DP (psf)	Air (@ 1.57psf)	Water (@ 6.24psf)	Glass Selection
Curtain Wall Only 51" x 99"	Florida #11260.2	Impact Test #110-11054-5	± 60	.09	9.0	1 1/16" HS IGU
		Impact Test #110-11054-7				7/16" Monolithic Laminated Both contain .075 "Storm" Inner Layer
51" x 99"	Florida #11260.2	Non-Impact Test #110-11054-1	± 60	.09	9.0	1 1/16" HS IGU
		Non-Impact Test #110-11054-2				7/16" Monolithic Laminated Both contain .075 "Storm" Inner Layer

Individual components can not be certified.

Only complete assemblies can be certified, as manufactured by Solar Innovations, Inc.

Please be sure to visit our website for additional product information.

[www.solarinnovations.com](http://www.solarinnovations.com)

