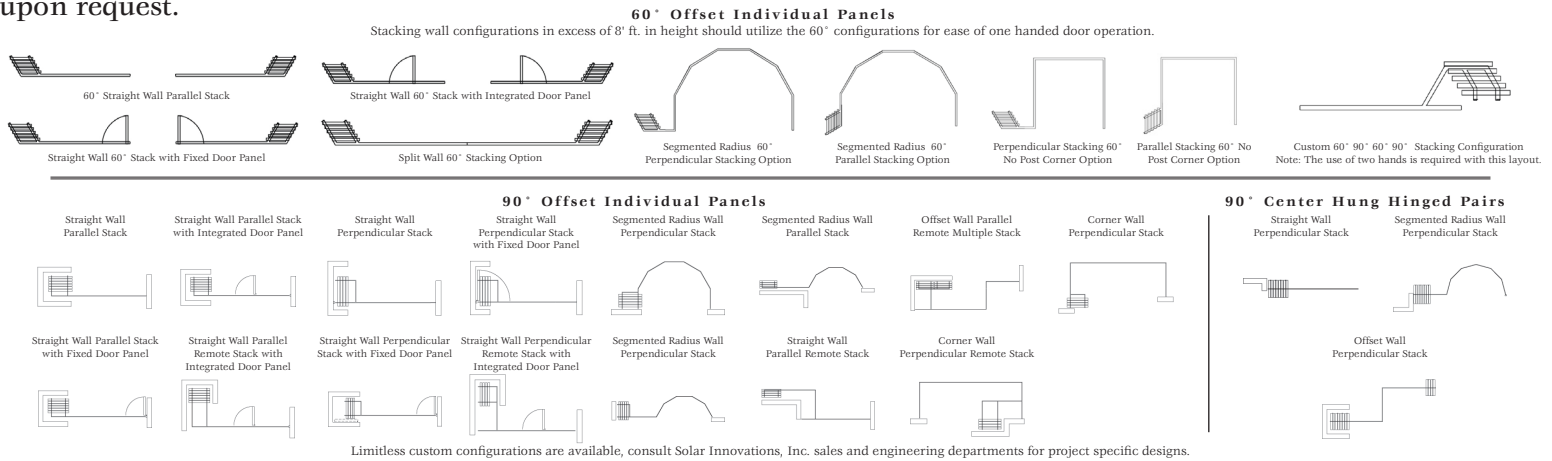




Solar Innovations SI3000C Clear Wall maximizes transparency for stadium suites, balcony enclosures, interior operable partitions, etc. Individual top load bearing sliding glass panels can be made to a maximum panel size of 3' x 10', or possibly larger, while offering some protection from wind. Aluminum profiles capture the head and sill, while the vertical edges of the glass remain free. When the doors are open, they can be neatly stacked, or pocketed away in a remote location. Special gaskets can be used to provide a minimal level of air and water performance upon request.



## Features:

- Standard Maximum Panel - 3' x 10'  
Panel weight limit of 500lbs.  
Over Sized Units Possible
- Center Hung, Fully Hinged or Hinged Pairs, and Twin Trolley, Individual Panels
- Custom stainless steel helical bearings rated for a maximum capacity of 350lbs./pair
- Accommodates monolithic glazing infills: 1/4"; 1/2"
- Performance dependent upon sill, jamb, and vertical edge seal choice.
- Standard finishes: AAMA 2603
  - Duracron: Hartford Green, Bronze, Black, Natural Clay, White, Sandstone
- LEED friendly system including recycled content
- Designed and manufactured in the U.S.A.

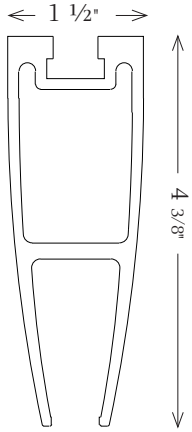
## Options:

- Multiple sill options
- Clear Wall, Mono Seal, or Dual Seal
- Custom Tinted and Decorative Glazing Available
- Unlimited Configurations
- Single Door Inserts Available
- Custom Hardware
- Custom finishes
  - Class I anodized: Dark Bronze, Clear
  - Powder coat finish: AAMA 2604-05
  - Fluoropolymer (50% or 70%): AAMA 2604-2605
  - Veneer & cladding options
  - Dual color or dual finish options

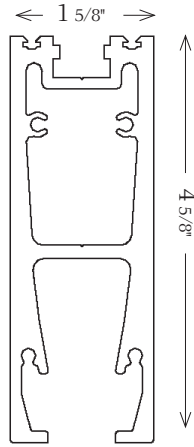
SI3000C is not recommended in applications that require a level of air and water performance.



Top & Bottom Rail



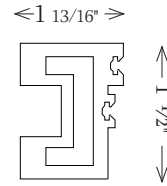
Head Rail



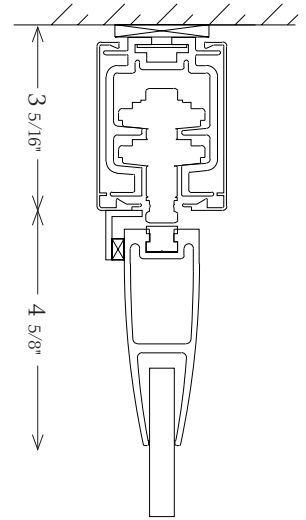
Mono Seal Clear Gasket



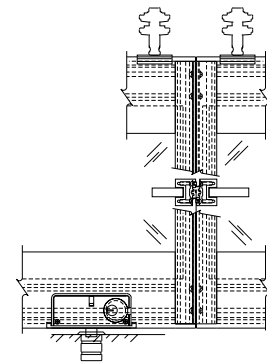
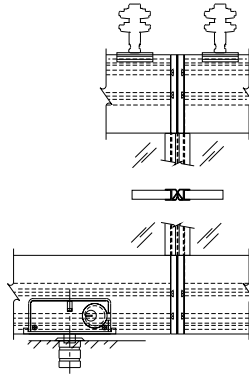
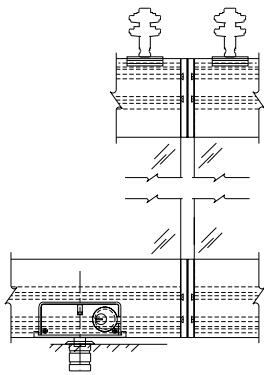
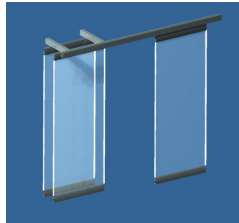
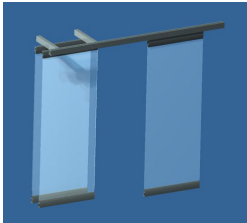
Aluminum Dual Seal Rail



Head

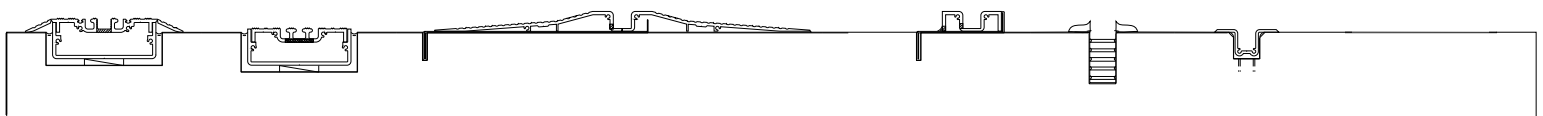


Jamb Options



Clear Wall

Dual Seal



Tank with Adjustable ADA Ramps

Tank

ADA Surface Mount

Surface Mount

Dust Proof Floor Strike

Recessed Flush Hat

Please consult [www.solarinnovations.com](http://www.solarinnovations.com) for testing information.

