

# SOLAR INNOVATIONS® DINING APPLICATIONS

Project Reference Sheet  
Revised 06.21.21



## HARPERS LANDING BAR & GRILL

PROJECT ID  
12-09-180

### LOCATION

Oakville, Ontario, Canada

### SERIES

All Wall Folding Glass Wall System, Straight Eave  
Lean-to Canopy and Curtain Walls

### GLAZING

1" LoE 272 Insulated Tempered

### FINISH

AAMA 2603 Bronze

### GLASS SQUARE FOOTAGE

4,658 sq. ft

### NUMBER OF PANELS

15



## PAYCHEX SAWGRASS DINING PAVILION

PROJECT ID  
17-01-028

### LOCATION

Rochester, New York

### SERIES

Three Split Wall G2 Nonthermal Folding Glass  
Wall Systems

### GLAZING

¼" Clear Tempered Monolithic

### FINISH

AAMA 2603 Black

### GLASS SQUARE FOOTAGE

402 sq. ft

### NUMBER OF PANELS

18

# SOLAR INNOVATIONS® DINING APPLICATIONS

Project Reference Sheet  
Revised 06.21.21



## HOPCAT BAR & RESTAURANT

PROJECT ID  
14-04-459

### LOCATION

Syracuse, New York

### SERIES

G3 Thermal Multi-Track Sliding Glass Door System

### GLAZING

1" Insulated

### FINISH

Custom "Smoke Gray"

### GLASS SQUARE FOOTAGE

336 sq ft

### NUMBER OF PANELS

8



## CLINTON HALL NY

PROJECT ID  
17-06-093

### LOCATION

Brooklyn, New York

### SERIES

Six G2 Folding Glass Walls Systems

### GLAZING

1" Neutral 70 Insulated Tempered

### FINISH

Custom "Grey Aluminum"

### GLASS SQUARE FOOTAGE

640 sq. ft

### NUMBER OF PANELS

32

# SOLAR INNOVATIONS® DINING APPLICATIONS

Project Reference Sheet  
Revised 06.21.21



## KONA GRILL

PROJECT ID  
10-04-432

### LOCATION

Baltimore, Maryland

### SERIES

Six All Wall G2 Thermal Folding Glass Wall Systems

### GLAZING

1" LoE 272 Insulated Tempered

### FINISH

Dark Bronze Anodized

### GLASS SQUARE FOOTAGE

574 sq. ft

### NUMBER OF PANELS

28



## CANTINA 1910

PROJECT ID  
14-04-118

### LOCATION

Chicago, Illinois

### SERIES

Three All Wall G3 Thermal Folding Glass Wall Systems

### GLAZING

1" Insulated

### FINISH

Dark Bronze Anodized

### GLASS SQUARE FOOTAGE

511 sq. ft

### NUMBER OF PANELS

9

# SOLAR INNOVATIONS® DINING APPLICATIONS

Project Reference Sheet  
Revised 06.21.21



## THE WHITMAN DINER

PROJECT ID  
08-09-257

### LOCATION

Blackwood, New Jersey

### SERIES

10' Mid Wall G2 Slide & Stack Glass Wall Systems and Aluminum Curtain Walls

### GLAZING

1" LoE 272 Insulated Tempered

### FINISH

Class I Clear Anodized

### GLASS SQUARE FOOTAGE

159 sq. ft

### NUMBER OF PANELS

9



## MILESTONES RESTAURANT

PROJECT ID  
15-06-374

### LOCATION

Markham, Ontario, Canada

### SERIES

8' G2 Thermal Slide & Stack Glass Wall System with Terrace Door

### GLAZING

1" LoE 272 Insulated Tempered

### FINISH

AAMA 2603 Black

### GLASS SQUARE FOOTAGE

187 sq. ft

### NUMBER OF PANELS

5

# SOLAR INNOVATIONS® DINING APPLICATIONS

Project Reference Sheet  
Revised 06.21.21



## GOODSTONE INN & RESTAURANT

PROJECT ID  
14-10-449

### LOCATION

Middleburg, Virginia

### SERIES

Straight Eave Lean-To Conservatory with  
G2 All Wall Folding Glass Window Systems

### GLAZING

1" LoE 340 Insulated Tempered

### FINISH

AAMA 2603 White

### GLASS SQUARE FOOTAGE

2,485 sq. ft

### SIZE OF STRUCTURE

Length 57' 11"

Width 25' 8"

Height 23' 9"



## RARE650 RESTAURANT

PROJECT ID  
14-01-428

### LOCATION

Syosset, New York

### SERIES

Straight Eave Double Pitch Conservatory with  
G2 Outswing French Doors, Dual-Track Sliding  
Glass Windows and G2 Split-Wall Folding Glass  
Windows System

### GLAZING

1" LoE 366 Insulated Tempered

### FINISH

AAMA 2603 Sandstone

### GLASS SQUARE FOOTAGE

2,137 sq. ft

### SIZE OF STRUCTURE

Length 51'

Width 28'

Height 16' 2"

# SOLAR INNOVATIONS® DINING APPLICATIONS

Project Reference Sheet  
Revised 06.21.21



## JELLYFISH RESTAURANT

PROJECT ID  
12-01-182

### LOCATION

Chicago, Illinois

### SERIES

Straight Eave Lean-To Sunroom with Dual Track  
Sliding Glass Door Windows

### GLAZING

1" LoE 272 Insulated Tempered

### FINISH

AAMA 2603 Black

### GLASS SQUARE FOOTAGE

1,230 sq. ft

### SIZE OF STRUCTURE

Length 53' 8"  
Width 15' 4"  
Height 8' 3"



## SHAKE SHACK

PROJECT ID  
10-12-086

### LOCATION

Brooklyn, New York

### SERIES

Straight Eave Lean-To Sunroom with Tilt Turn  
Windows, G2 Outswing Terrace and French  
Doors

### GLAZING

1" LoE 366 Insulated Tempered

### FINISH

Dark Bronze Anodized

### GLASS SQUARE FOOTAGE

1,921 sq. ft

### SIZE OF STRUCTURE

Length 21' 6"  
Width 22' 5"  
Height 14' 10"

# SOLAR INNOVATIONS® DINING APPLICATIONS

Project Reference Sheet  
Revised 06.21.21



## OSTERIA MORINI LONG ISLAND

PROJECT ID  
19-03-346

### LOCATION

Garden City, New York

### SERIES

G2 Split Wall System with G2 Single Door

### GLAZING

1" Insulated Tempered

### FINISH

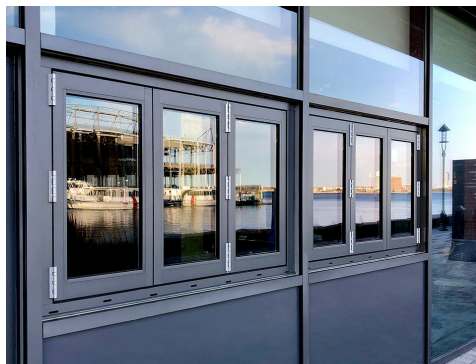
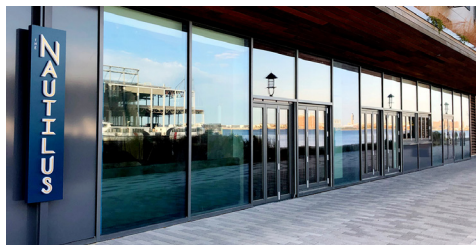
Class I Clear Anodized

### GLASS SQUARE FOOTAGE

460 Sq. ft

### NUMBER OF PANELS

17



## NAUTILUS PIER 4

PROJECT ID  
19-08-042

### LOCATION

Boston, Massachusetts

### SERIES

G2 Folding Door and Window Systems

### GLAZING

1 ¼" Insulated Tempered

### FINISH

Custom Paint "Medium Gray"

### GLASS SQUARE FOOTAGE

174 Sq. ft

### NUMBER OF PANELS

18